

pinDMD V3 Installation Guide



WHAT'S INCLUDED

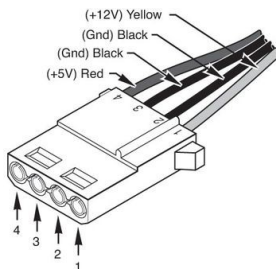
pinDMD3 RGB Panel / Diver Board	x1
USB Interface Cable	x1

LED PANEL WARRANTY: Any panel with a severe defect will be replaced under warranty. This does not include pixels very slightly glowing green. This is minor design error with all these china panels and can not fixed.

Warning: THIS IS A 5V DEVICE. DO NOT EXCEED THIS VOLTAGE.

Note: A standard 4pin molex connector can be plugged into the pinDMD3. Only the (red)5v wire is used to power the unit. The (yellow)12v wire is ignored.

Note: pinDMD3 will not be recognized by a computer until it receives power from the 4pin molex connector. PinDMD3 does not receive power from the USB cable.



INSTALLATION

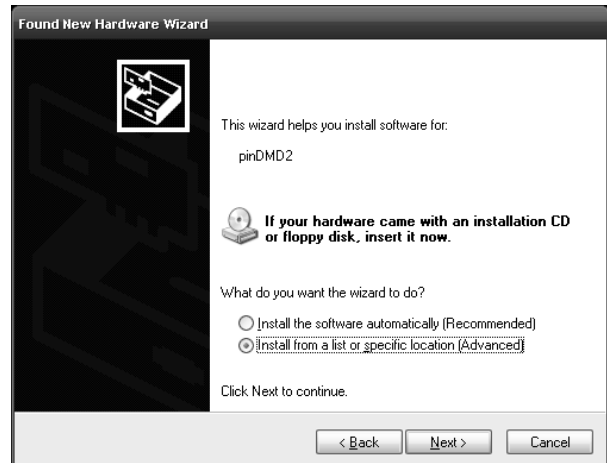
[Download pinDMD3 USB drivers.](#)

Connect the pinDMD board to your computer using a USB-A to USB-B cable.

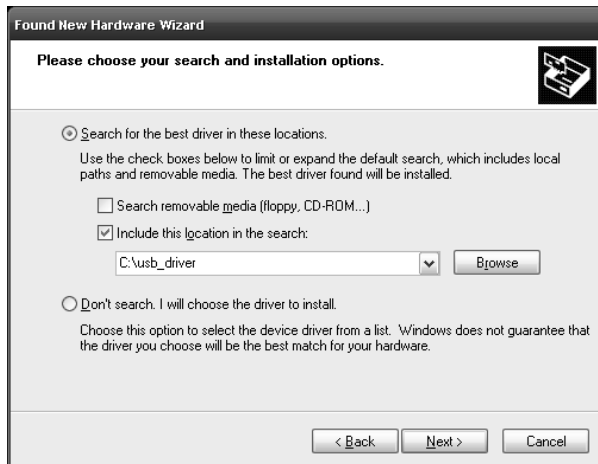
INSTALLTION WINDOWS XP



(Step1)



(Step2)



(Step3) Browse to the unzipped usb drivers folder.



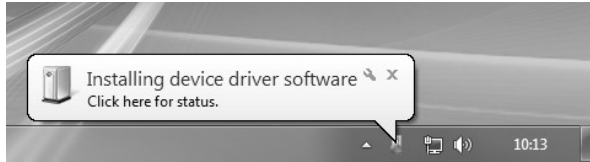
(Step4)

pinDMD3 Installation Guide

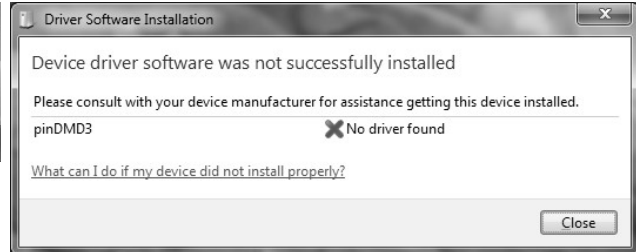
pinDMD.com

INSTALLATION WINDOWS 7

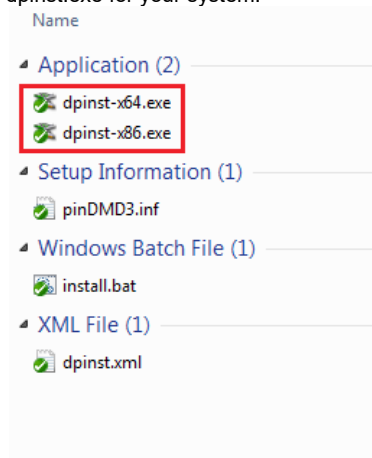
(Step1) Plug in the pinDMD3, Click the balloon pop up.



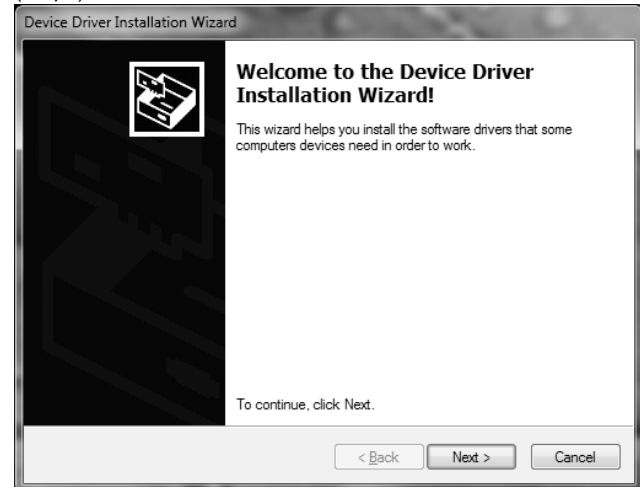
(Step2) (Wait for windows to fail finding the driver), Click 'Close'



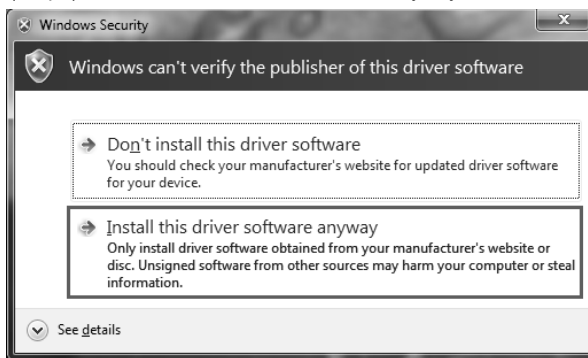
(Step3) Unzip the usb drivers and run the appropriate dpinst.exe for your system.



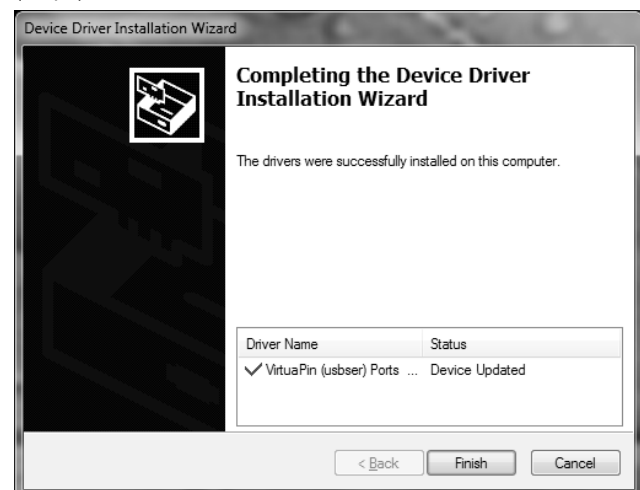
(Step4) Follow the installation wizard instructions.



(Step5) Click 'Install this driver software anyway'.



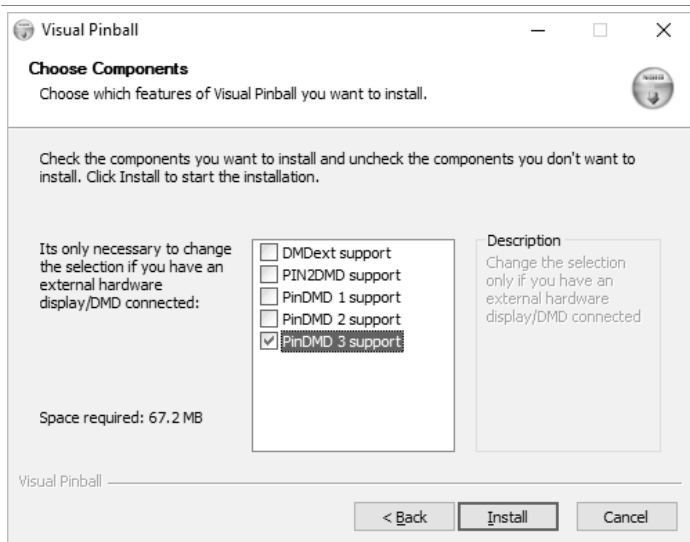
(Step6) Click 'Finish'.



INSTALLATION WINDOWS 10

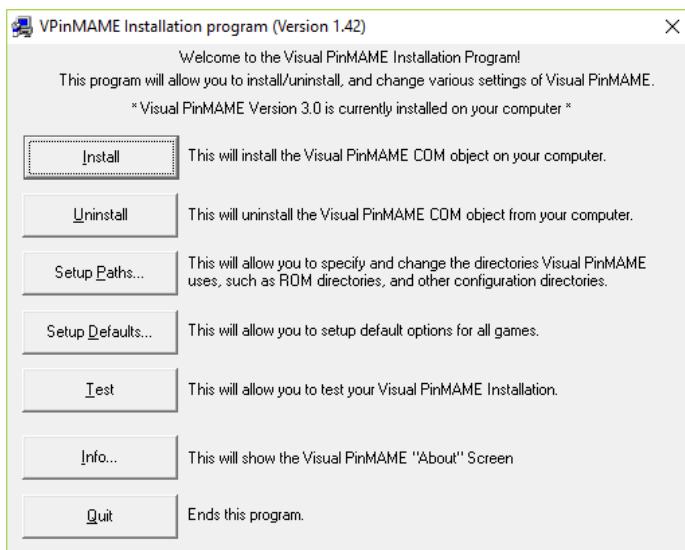
Note: Windows 10 will install the pinDMD3 automatically as a “USB Serial Device”. No pinDMD3 drivers are needed.

PINMAME SETUP



1) Download [VPX installer](http://vpforms.org) from vpforms.org

2) Select PinDMD3

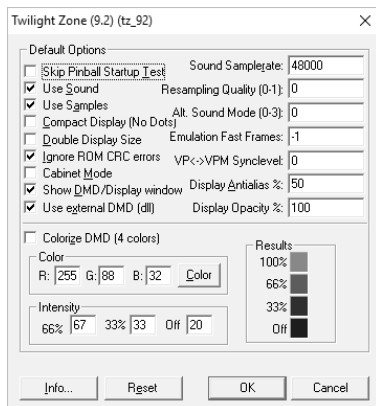


3) Run the VisualPinMAME Setup.exe installer and click 'Install'

4) Click 'Test'

5) Select a rom from the list.

6) Select 'Game Options'



Tick "Use external DMD (dll)"

When "Colorize DMD" is ticked each shade can be assigned its own colour.

Note: Selecting black(0,0,0) as the DMD colour will activate rainbow cycle mode.

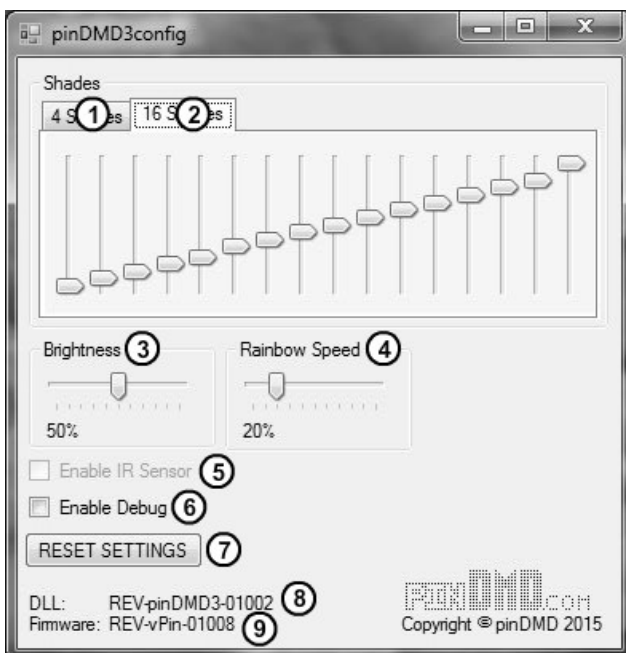
Note: In standard mode only the main colour needs to be selected. All other shades are calculated automatically.

STATUS LED

- OFF** - The pinDMD has encountered an internal error.
- Fast Flash** - The pinDMD is in initial start up state.
- Slow Flash** - The pinDMD is has successfully received DMD frames.

The status LED will change state for every DMD frame the pinDMD receives. This will cause it to flash when running pinball machine animations. This can be used as an indicator that the pinDMD is receiving DMD frames correctly without a DMD attached.

CONFIGURATION TOOL

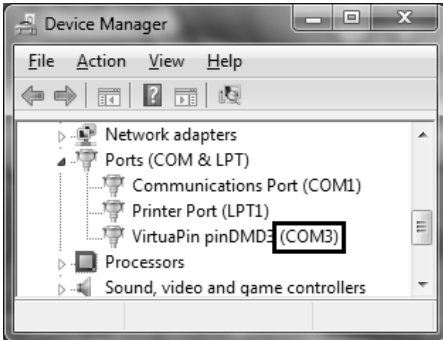


The [pinDMDconfig.exe](#) can be used to view/update various settings stored in the pinDMD3 eeprom.

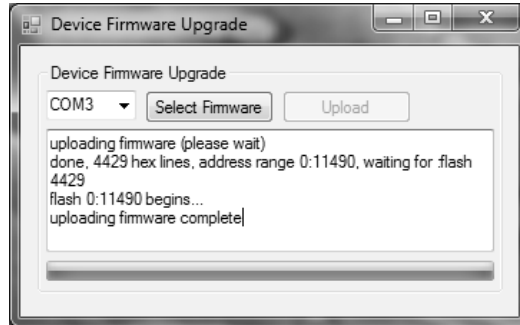
- 1) 4 shades fine adjustment.
- 2) 16 shades fine adjustment.
- 3) DMD brightness 0-100% (whole DMD)
- 4) Rainbow effect speed.
- 5) Enable IR sensor (Not supported yet)
- 6) Enable debug (display debug info on DMD)
- 7) Reset all settings to eeprom default values.
- 8) Current version of the pinDMD.dll (in folder)
- 9) Current version of the pinDMD3 device.

DEVICE FIRMWARE UPGRADE

DFU (Device Firmware Upgrade) can be used to update the pinDMD3's firmware. The firmware can be updated to add new features and fix bugs.



(Step1) Open up Device Manager and find out which COM port the pinDMD3 has been assigned.



(Step2) Select the correct COM port.
(Step3) Select the firmware.bin file you want to upload.
(Step4) Click Upload. (Once the upload has completed you should see similar output to the above image).

FAQ

- Problem:** DMD shows logo image but windows does not recognize the pinDMD.
Solution: - Follow the above guide, make sure the pinDMD usb driver is installed.
- Problem:** Windows recognizes the pinDMD and the logo is displayed on the pinDMD but when a visual pinball table is played the DMD remains blank.
Solution: - Check the correct pinDMD version of [VpinMAME.dll](#) has been installed.
- Check to make sure the table is using pinMAME.
- Some older Alphanumeric tables are not supported by pinDMD.
- Problem:** I want to disable the pinDMD on certain tables.
Solution: - Add '.showPinDMD = 0' to the table script. It may also need to be set to 0 in windows registry.
- Problem:** I want to disable the virtual pinMAME DMD on certain tables.
Solution: - Add '.hidden = 0' to the table script.

Email contact@pindmd.com if you require more information / additional help.

DEBUG

If you are having problems with the pinDMD3 and none of the above solutions help, you might be able to get more useful information from the pinDMD.dll debug log. This can be activated by placing a [pinDMD.ini](#) file in the same directory as the pinDMD.dll

A pinDMD_log.txt file will be generated with debug mode activated. The log will contain information that can be used to help resolve the problem.

ACKNOWLEDGEMENTS

VpinMAME.dll is a custom build of PinMame

<http://www.pinmame.com/>

<http://sourceforge.net/projects/pinmame/develop/>

Custom pinDMD build can be downloaded from the following link.

<http://www.pindmd.com/pinmame.zip>

DISCLAIMER

LIMITATION OF LIABILITY

IN NO EVENT WILL RUSSELL PIRIE BE LIABLE, WHETHER IN CONTRACT, TORT, OR OTHERWISE, FOR ANY INCIDENTAL, SPECIAL, INDIRECT, CONSEQUENTIAL OR PUNITIVE DAMAGES, INCLUDING, BUT NOT LIMITED TO, DAMAGES FOR ANY LOSS OF USE, LOSS OF TIME, INCONVENIENCE, COMMERCIAL LOSS, OR LOST PROFITS, SAVINGS, OR REVENUES TO THE FULL EXTENT SUCH MAY BE DISCLAIMED BY LAW.

THIS BOARD IS INTENDED FOR USE FOR DEMONSTRATION, OR EVALUATION PURPOSES ONLY AND IS NOT CONSIDERED BY PINDMD TO BE A FINISHED END-PRODUCT FIT FOR GENERAL CONSUMER USE. PERSONS HANDLING THE PRODUCT(S) MUST HAVE ELECTRONICS TRAINING AND OBSERVE GOOD ENGINEERING PRACTICE STANDARDS. AS SUCH, THE GOODS BEING PROVIDED ARE NOT INTENDED TO BE COMPLETE IN TERMS OF REQUIRED DESIGN-, MARKETING-, AND/OR MANUFACTURING-RELATED PROTECTIVE CONSIDERATIONS, INCLUDING PRODUCT SAFETY AND ENVIRONMENTAL MEASURES TYPICALLY FOUND IN END PRODUCTS THAT INCORPORATE SUCH SEMICONDUCTOR COMPONENTS OR CIRCUIT BOARDS. THIS BOARD DOES NOT FALL WITHIN THE SCOPE OF THE EUROPEAN UNION DIRECTIVES REGARDING ELECTROMAGNETIC COMPATIBILITY, RESTRICTED SUBSTANCES (ROHS), RECYCLING (WEEE), FCC, CE OR UL, AND THEREFORE MAY NOT MEET THE TECHNICAL REQUIREMENTS OF THESE DIRECTIVES OR OTHER RELATED DIRECTIVES.