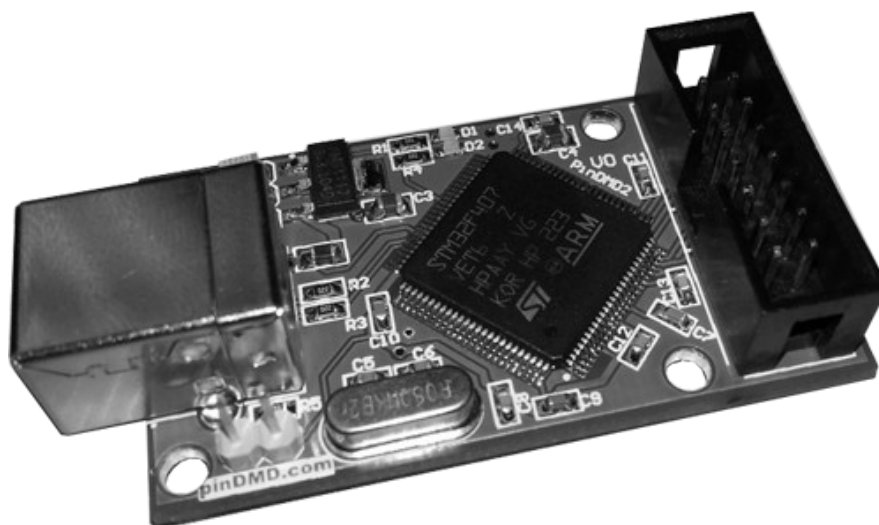


## pinDMD V2 Installation Guide



## WHAT'S INCLUDED

---

pinDMD2 Board	x1
14-way IDC Interface Cable	x1

## COMPATIBLE PINBALL DOT MATRIX DISPLAYS

---

### Vishay Plasma Range

APD-128G032

APD-128G032A

APD-192G064-1

### Vishay LED Range

LEE-128G032

LEE-128G032-1

LEE-128G032A

LEE-128G032B

### Pin-LED

20002

### X-PIN

XP-DMD4096

**Note: Other direct-replacement pinball Dot Matrix Displays (ie. Cherry) should work as well but have not been tested!**

**Warning: The Dot Matrix Display requires its own power source. The pinDMD does not supply the Dot Matrix Display with power!**

**Warning: Make sure the pinDMD board is placed in a well ventilated area. Too much heat can cause the pinDMD to under-perform resulting in corrupt frame data / render problems.**

**Warning: The pinDMD board is shipped in protective anti-static packaging. The board must not be subject to high electrostatic potentials. General practice for working with static sensitive devices should be applied when working/handling this board.**

## INSTALLATION

**THIS WARNING ONLY APPLIES TO THE PINLED 20002 AND XPIN BOARDS, NOT THE VISHAY BOARDS.**

**Note: Make sure the Dot Matrix Display has power before the pinDMD board is powered. The pinDMD can be damaged if connected to a unpowered dot matrix display.**

**An ideal setup would be where the Dot Matrix Display is connected to the same power source as the computer which is controlling the pinDMD. In this situation the Dot Matrix Display will be powered straight away and the pinDMD soon after (once the computer boots and enables its USB ports). Running your 5v Dot Matrix Display using your pc psu is also a perfect solution.**

**Some computers will keep the USB ports powered even when the pc is switched off. It is recommended this option is disabled to prevent possible damage to the pinDMD board from being connected to a unpowered Dot Matrix Display.**

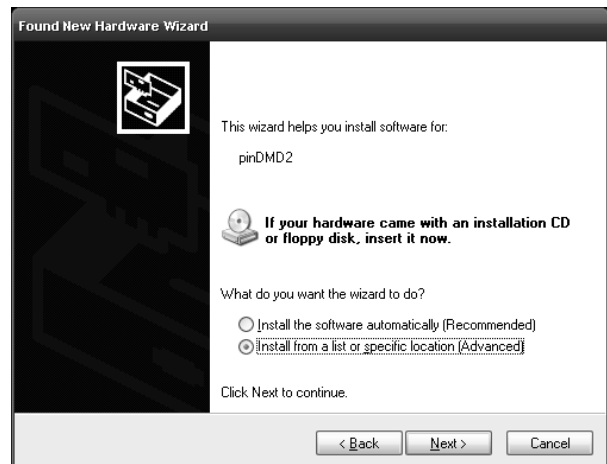
[Download pinDMD2 USB drivers.](#)

Connect the pinDMD board to your computer using a USB-A to USB-B cable.

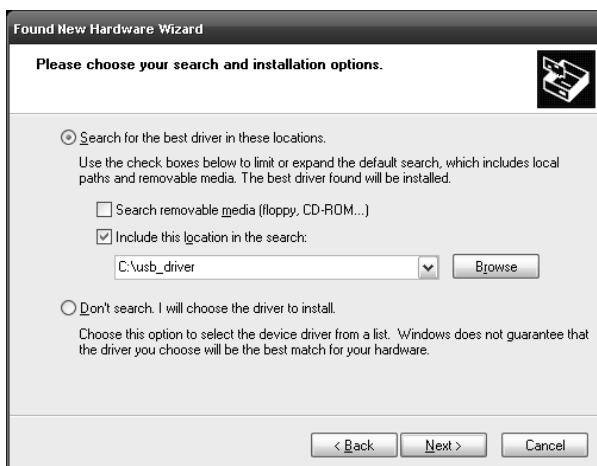
### INSTALLTION WINDOWS XP



(Step1)



(Step2)



(Step3) Browse to the unzipped usb drivers folder.



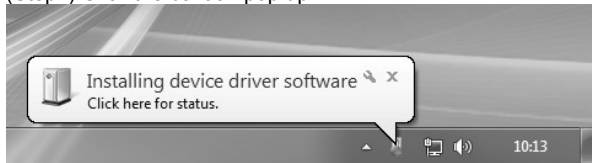
(Step4)

# pinDMD2 Installation Guide

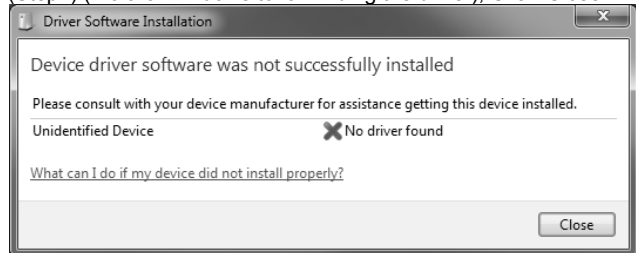
pinDMD.com

## INSTALLATION WINDOWS 7

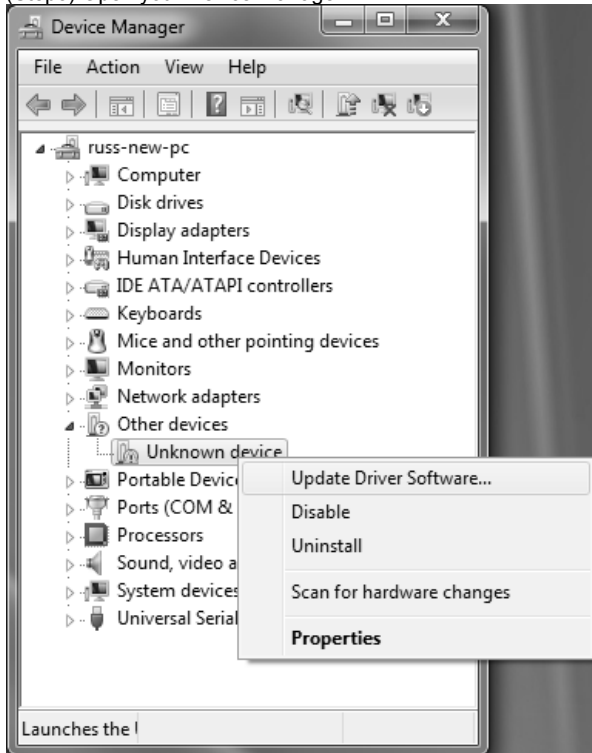
(Step1) Click the balloon pop up.



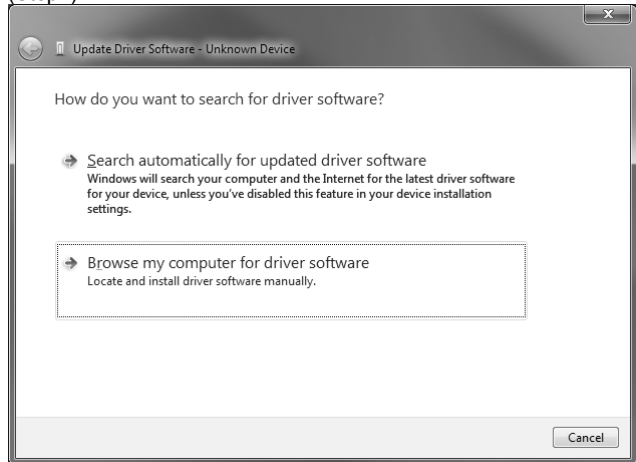
(Step2) (Wait for windows to fail finding the driver), Click 'Close'



(Step3) Open your Device Manager.



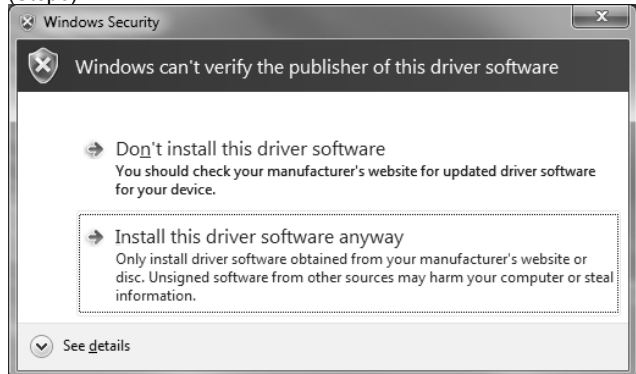
(Step4)



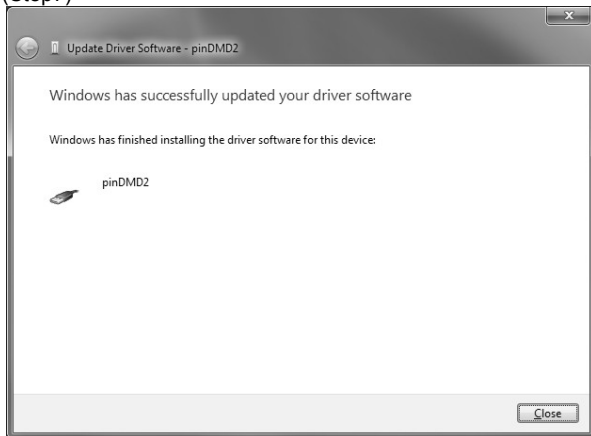
(Step5) Browse to the unzipped usb drivers folder.



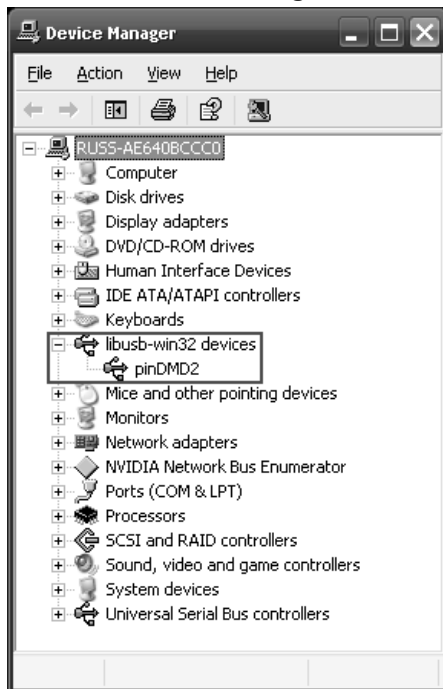
(Step6)



(Step7)



Once the pinDMD libusb driver has been installed successfully. You should be able to see it in the windows 'Device Manager'.

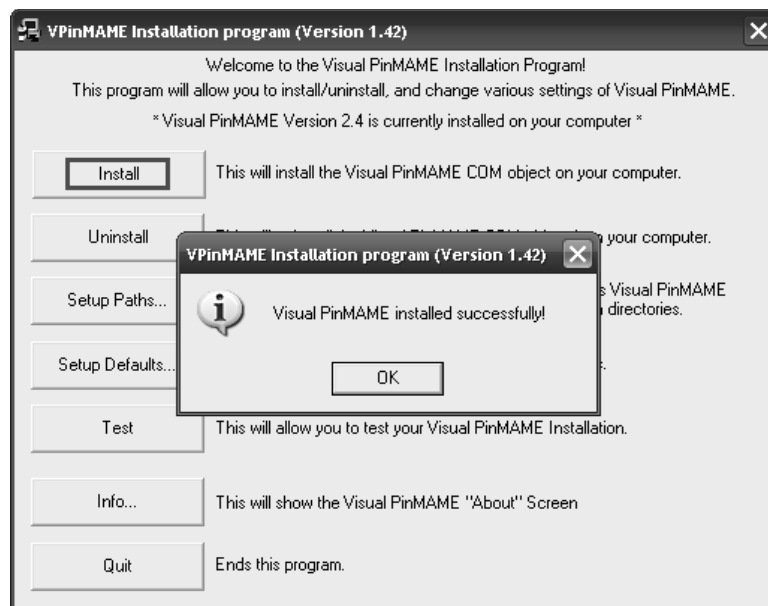


**Warning: Make sure the pinDMD is plugged into a USB 2.0 socket. USB 3.0 on some systems can cause unexpected behaviour. Some newer computers may require you to use USB 3.0.**

Download the custom [VpinMAME.dll](#)  
Replace your current VpinMAME.dll with this version

It is recommended to rename your old file in case you want to revert to it.

Run the VisualPinMAME SETUP.exe installer and click *Install* this will install the custom VpinMAME.dll



All pinball tables can be loaded and run as usual.

## STATUS LED

---

- OFF - The pinDMD has encountered an internal error.
- Fast Flash - The pinDMD is attempting to connect to the host pc.
- Slow Flash - The pinDMD is connected and is ready to receive DMD frames.

The status LED will change state for every DMD frame the pinDMD receives. This will cause it to flash when running pinball machine animations. This can be used as an indicator that the pinDMD is receiving DMD frames correctly without a DMD attached.

## FAQ

---

- Problem:** Windows recognizes the pinDMD but the DMD shows no logo image.  
**Solution:**
- Check to make sure the DMD is being supplied the correct voltage.
  - Check the DMD ribbon cable is firmly seated in both headers.
- Problem:** DMD shows logo image but windows does not recognize the pinDMD.  
**Solution:**
- Follow the above guide, make sure the pinDMD usb driver is installed.
  - Try restarting the computer.
- Problem:** Windows recognizes the pinDMD and the logo is displayed on the pinDMD but when a visual pinball table is played the DMD remains blank.  
**Solution:**
- Check the correct pinDMD version of [VpinMAME.dll](#) has been installed.
  - Check to make sure the table is using pinMAME.
  - Some older Alphanumeric tables are not supported by pinDMD.
- Problem:** The pinDMD shows up as an 'Unkown Device' under windows.  
**Solution:**
- Make sure the pinDMD is plugged into a USB 2.0 port and not a USB 3.0 port.
  - Check that mother board USB drivers have been installed.
  - Some newer computers may require you to use the USB 3.0 port.
  - Try using the motherboard breakout USB cable.
  - Try using a external USB hub.
  - If all of the above fails, a cheap PCI USB 2.0 card can be used.
    - Known working cards - '5 Port USB 2.0 PCI Adapter Card VIA VT6202L 24'
    - 'Rocketfish PCI Express RF-P2USB3'
- Problem:** The DMD image is shaky and unclear.  
**Solution:**
- This is usually caused by some form of interference. Often by near by power cables too close to the DMD ribbon cable or the DMD power cable is too long (try to keep under 1 metre and away from other power cables).
  - A small 10pf capacitor across the DotClock and DotData pins on the DMD display ribbon cable IDC connector can also help.
- Problem:** Faint horizontal line has appeared on my DMD.  
**Solution:**
- This is a fault with the DMD and not the pinDMD/firmware. The DMD will need to be replaced.
- Problem:** I want to disable the pinDMD on certain tables.  
**Solution:**
- Add '.showPinDMD = 0' to the table script. It may also need to be set to 0 in windows registry.
- Problem:** I want to disable the virtual pinMAME DMD on certain tables.  
**Solution:**
- Add '.hidden = 0' to the table script.

Email [contact@pindmd.com](mailto:contact@pindmd.com) if you require more information / additional help.

## ACKNOWLEDGEMENTS

---

VpinMAME.dll is a custom build of PinMame

<http://www.pinmame.com/>

<http://sourceforge.net/projects/pinmame/develop/>

Custom pinDMD build can be downloaded from the following link.

<http://www.pindmd.com/pinmame.zip>



## DISCLAIMER

---

### LIMITATION OF LIABILITY

IN NO EVENT WILL RUSSELL PIRIE BE LIABLE, WHETHER IN CONTRACT, TORT, OR OTHERWISE, FOR ANY INCIDENTAL, SPECIAL, INDIRECT, CONSEQUENTIAL OR PUNITIVE DAMAGES, INCLUDING, BUT NOT LIMITED TO, DAMAGES FOR ANY LOSS OF USE, LOSS OF TIME, INCONVENIENCE, COMMERCIAL LOSS, OR LOST PROFITS, SAVINGS, OR REVENUES TO THE FULL EXTENT SUCH MAY BE DISCLAIMED BY LAW.

THIS BOARD IS INTENDED FOR USE FOR DEMONSTRATION, OR EVALUATION PURPOSES ONLY AND IS NOT CONSIDERED BY PINDMD TO BE A FINISHED END-PRODUCT FIT FOR GENERAL CONSUMER USE. PERSONS HANDLING THE PRODUCT(S) MUST HAVE ELECTRONICS TRAINING AND OBSERVE GOOD ENGINEERING PRACTICE STANDARDS. AS SUCH, THE GOODS BEING PROVIDED ARE NOT INTENDED TO BE COMPLETE IN TERMS OF REQUIRED DESIGN-, MARKETING-, AND/OR MANUFACTURING-RELATED PROTECTIVE CONSIDERATIONS, INCLUDING PRODUCT SAFETY AND ENVIRONMENTAL MEASURES TYPICALLY FOUND IN END PRODUCTS THAT INCORPORATE SUCH SEMICONDUCTOR COMPONENTS OR CIRCUIT BOARDS. THIS BOARD DOES NOT FALL WITHIN THE SCOPE OF THE EUROPEAN UNION DIRECTIVES REGARDING ELECTROMAGNETIC COMPATIBILITY, RESTRICTED SUBSTANCES (ROHS), RECYCLING (WEEE), FCC, CE OR UL, AND THEREFORE MAY NOT MEET THE TECHNICAL REQUIREMENTS OF THESE DIRECTIVES OR OTHER RELATED DIRECTIVES.